

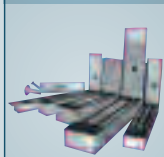
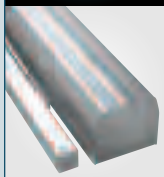
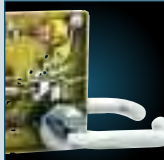


Education

Security and Life-Safety:
For Schools and Education Facilities

ASSA ABLOY

The global leader in
door opening solutions



Our products withstand extreme abuse and far exceed ANSI/BHMA standards for cycles of operation.

ASSA ABLOY Door Security Solutions Canada: Understanding the Changing World of Security

Being prepared is the best defense in the event of a school emergency. A secure facility involves keeping unauthorized individuals from entering the building, protecting from dangers within the school, and ensuring easy egress in case of emergency - all without giving the appearance or perception of a fortress-like setting. Achieving these goals is entirely dependent upon selecting the right doors and hardware.

We'll provide doorway systems that combine security with life-safety and accessibility:

- + Monitor and control access: traditional locking solutions combined with advanced access control technology to monitor and control access
- + Quickly secure a classroom from the inside: specially-designed lockset functions
- + Minimize exposure to smoke and provide a safe means of egress: fire-rated doors with self-closing and latching hardware
- + Keep within budget and implement access control: everything from networked systems with real-time lockdown to stand-alone battery-operated locks



Reliable Security Solutions

We bring to you a group of brands that have been leading the security and life-safety industry for generations, providing everything you need for complete doorways that are well-integrated with a facility's security system.

In addition, we continually strive to make products that are easier to install, more durable, and more sophisticated. The result is exciting innovations that capitalize on new technologies and set new standards for building safety and security.

Architectural & Electromechanical Hardware

ADAMS RITE ASSA CORBIN RUSSWIN EFF EFF FOLGER ADAM EDC HES MARKAR MCKINNEY NORTON RIXSON SARGENT SECURITRON YALE

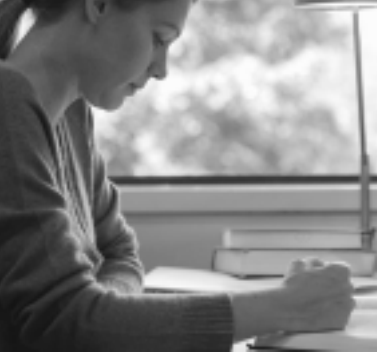
Doors & Frames

FLEMING BARON

Full Range of Services

Our specially-trained educational consultants provide technical support, specification writing and training geared to the needs of school facilities. They'll help you through the complexities of life-safety codes and security issues relevant to doorways. Our customer support includes involvement during every phase of design and construction.

- + Specification writing and support
- + Standards definition and management
- + Key control and management
- + Site surveys and audits
- + Training programs
- + Code compliance
- + Pre-construction meetings at jobsite
- + Review of installation procedures



Access Control Solutions

Controlling access privileges, safely evacuating a building, and quickly securing a building are efficiently accomplished by our electronic door control solutions. Mechanical strength combined with a variety of high-tech functions gives you intelligent security and safety, all with minimal inconvenience to building occupants.

- + Electrified Mortise and Cylindrical Locks
- + Magnetic Locks
- + Exit Devices
- + Access Control System Locks
- + Biometric Devices
- + Stand-Alone Locks
- + Card Readers
- + Door Operators
- + Proximity Cards
- + Electric Strikes

Life-Safety and Loss Prevention Solutions

Exit devices perform the crucial function of facilitating safe exiting (or “free egress”) while restricting access from the outside. Our durable, vandal-resistant exit devices offer a wide choice of both mechanical and electronic control functions.

- + Delayed Egress
- + Alarmed Option
- + Electric Latch Retraction
- + Touch Sense Technology
- + Electric Dogging



Sargent 80 Series Exit Device

Easy Installation - Saves Time & Money!

Customer input combined with engineering ingenuity has resulted in innovations to popular products, making them even easier to install. Notable examples include the following:

- + Easy to install mortise and cylindrical locks
- + Electrolynx™ “plug and go” connectors
- + Better packaging ensures no missing parts



CORBIN RUSSWIN's CL 3300



SARGENT's 10 Line

Ask your Door Security Solutions representative for details on these and other easy-to-install products.



Maintaining Key Control

Patented key systems prevent unauthorized key blank distribution. Our mechanical key systems easily integrate into electronic access control systems, providing the ultimate in physical security with the highest level of control possible.

In addition, our experts can conduct keying conferences to design masterkey systems.

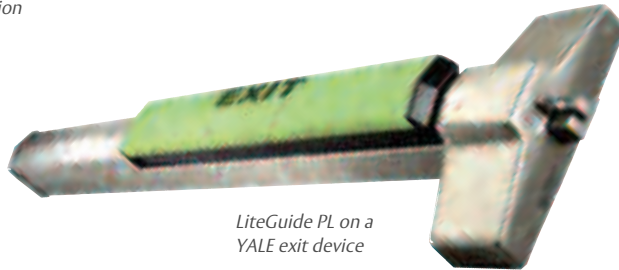
KeyWizard™ key management software makes it easy to track all issued keys from ASSA ABLOY Group companies.



ASSA Cliq and ASSA Twin Maximum™ for patented keyway protection



Ask about our free manual
Developing and Managing Key Control
Policies and Procedures



*LiteGuide PL on a
YALE exit device*

LiteGuide™

It's Easy To See The Difference.

LiteGuide – an advanced pathway lighting system featuring products from CORBIN RUSSWIN, FLEMING BARON, SARGENT and YALE – helps people immediately locate the nearest exit to evacuate quickly and safely in an emergency. The LiteGuide system brightly illuminates the frame, egress hardware, a low level exit sign on the door, and even the path leading to the opening. With emergency egress lighting requirements being written into building codes, this system is an important innovation with options suitable to both new and retrofit applications.

Choose from:

LiteGuide EL (Electroluminescent)

- + Much more visible than any other light source, especially in dark or smoky conditions
- + Designed for continuous operation or emergency activation
- + Our specially designed patent-pending frame channels and protects the electroluminescent material from abuse

LiteGuide PL (Photoluminescent)

- + Recharges from ambient light and emits light when light is gone
- + Ideal for retrofit, no wiring



*LiteGuide EL with products from
FLEMING and SARGENT*

Doorway Solutions for Schools

Gymnasium Doors

- 2 Hollow Metal Doors with ElectroLynx
- 1 Hollow Metal Frame with ElectroLynx
- 2 Continuous Hinges
- 1 Key Locking Mullion
- 2 Exit Devices with REX
- 2 Door Closers
- 2 Overhead Stops
- 2 Kickplates
- 2 Door Position Switches
- 1 Raindrip
- 1 (Set) Weatherstripping
- 2 Sweeps
- 1 Threshold

Music Room Door

- | | |
|--|---------------------------------|
| 1 Wood Door with ElectroLynx | 1 Card Reader/Keypad/Key Switch |
| 1 Hollow Metal Frame with ElectroLynx | 1 Kickplate |
| 2 Heavy Weight Hinges | 1 Floor Stop |
| 1 Heavy Weight Hinge with ElectroLynx | 1 Door Position Switch |
| 1 Exit Device with Electric Latch Retraction | 1 Power Supply |
| 1 Door Closer | 1 (Set) Sound Seals |
| | 1 Automatic Door Bottom |
| | 1 Threshold |

Administration Office Door

- 1 Wood Door
- 1 Hollow Metal Frame
- 3 Hinges
- 1 Entrance Lock
- 1 Door Closer
- 1 Kickplate
- 1 Door Stop
- 3 Silencers

Entrance Doors

- | | |
|---|--------------------------|
| 2 Half Glass Hollow Metal Doors with ElectroLynx | 2 Handicap Actuators |
| 1 Hollow Metal Frame with ElectroLynx | 2 Kickplates |
| 2 Floor Closers | 2 Overhead Stops |
| 2 Electric Intermediate Pivots with ElectroLynx | 1 Raindrip |
| 1 Key Locking Mullion | 2 (Set) Weatherstrip |
| 2 Rim Exit Devices with Electric Latch Retraction | 2 Sweeps |
| 2 Handicap Operators | 1 Threshold |
| | 2 Door Position Switches |
| | 1 Power Supply |
| | 1 Card Reader |



- Maintenance Room Door**
- 1 Hollow Metal Door with ElectroLynx
 - 1 Hollow Metal Frame with ElectroLynx
 - 2 Hinges
 - 1 Electric Hinge with ElectroLynx
 - 1 Access Control Mortise Lock
 - 1 Door Closer
 - 1 Kickplate
 - 1 Door Stop
 - 1 Door Position Switch
 - 3 Silencers

- Cross Corridor Doors**
- 2 Wood Doors
 - 1 Hollow Metal Frame
 - 6 Pocket Pivots
 - 2 Exit Devices (No Bottom Rod)
 - 1 Astragal
 - 2 Door Closers
 - 1 Coordinator
 - 2 Wall Magnets
 - 1 (Set) Smoke Seals
 - 1 (Set) Hot Smoke Seals

- Classroom Door**
- 1 Wood Door
 - 1 Hollow Metal Frame
 - 3 Hinges
 - 1 Security Classroom Function Mortise Lock
 - 1 Closer
 - 1 Kickplate
 - 1 Door Stop
 - 1 (Set) Smoke Seals
 - 1 (Set) Hot Smoke Seals

A safe learning environment is a critical component in achieving academic excellence.

Our experience and expertise in designing access control and security solutions specific to the education market is unrivaled.

This illustration depicts complete solutions that are ideal for various types of openings common in K-12 schools.

Contact your local ASSA ABLOY Door Security Solutions Canada consultant for details or explore the “3D Walkthrough” section of www.assaabloydsseducation.com for additional applications.

Complete Doorway Solutions

ElectroLynx™

Hardwiring Made Easy™

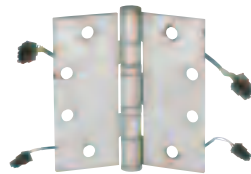
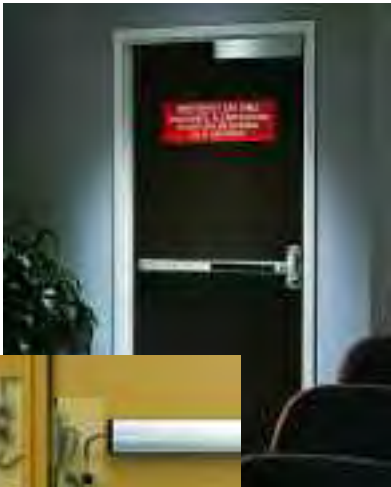


Installation and maintenance of electrified openings is easy with ElectroLynx, a system of Molex® plug-in connectors and standardized wiring.

Doors, frames, and electromechanical hardware can come pre-wired with plug-in connectors. This eliminates the need to create connections or drill holes in the door or frame. The plugs and wiring are concealed to preserve the security and aesthetics of the opening.

- + Pre-wired components for fast and fool-proof installation, and easy upgrades
- + Female plug on hardware components, male plug on doors and frames
- + Secured connection

Look for the LYNX™



Hollow Metal

Doors. Frames. Specialty.



Fleming Baron offers a complete line of steel doors for the commercial, institutional and industrial construction markets. Whether for durability, security, aesthetics or fire protection requirements, Fleming Baron has the right door to suit your needs. All Fleming Baron doors are manufactured using Paintable Galvanneal Steel which offers corrosion protection on every square inch, both outside and inside.

- + Manufactured from Paintable Galvanneal, a hot-dipped galvanized steel
- + 10-year rust perforation and finished paint film adhesion warranty
- + Closer reinforcing in all doors
- + Level 'A' grade in accordance with ANSI-A250.4 test procedures

Fleming offers one of the most complete product lines of Steel Doors and Frames and Steel Fire Doors and Frames in the world.

MicroShield™

Added Defense Against the Growth of Bacteria and Other Microbes

A new kind of safety solution from ASSA ABLOY Group door hardware manufacturers

CORBIN RUSSWIN | SARGENT | YALE

The Challenge

To protect against the spread of bacteria and other dangerous microbes, it's important to consider the role of high touch door hardware in a publicly-used building. Visitors and occupants continuously handle door levers and exit devices. Bacteria and other microbes can live on these hardware surfaces for hours, transferring from one person to another.

The Solution

Now door hardware, something everyone touches, can be protected against the growth of many microbes. ASSA ABLOY Group companies offer MicroShield™, an imperceptible antimicrobial hardware coating. MicroShield uses proven silver-based technology from Agion®, a leading provider of antimicrobial solutions, to stem the spread of bacteria and other microbes. MicroShield is effective against a broad range of:

- Bacteria
- Mold
- Fungi
- Algae
- Mildew

How It Works

MicroShield is a silver-based hardware finish that continuously destroys organisms in three ways – by attacking the cell wall, interrupting metabolism and preventing reproduction.

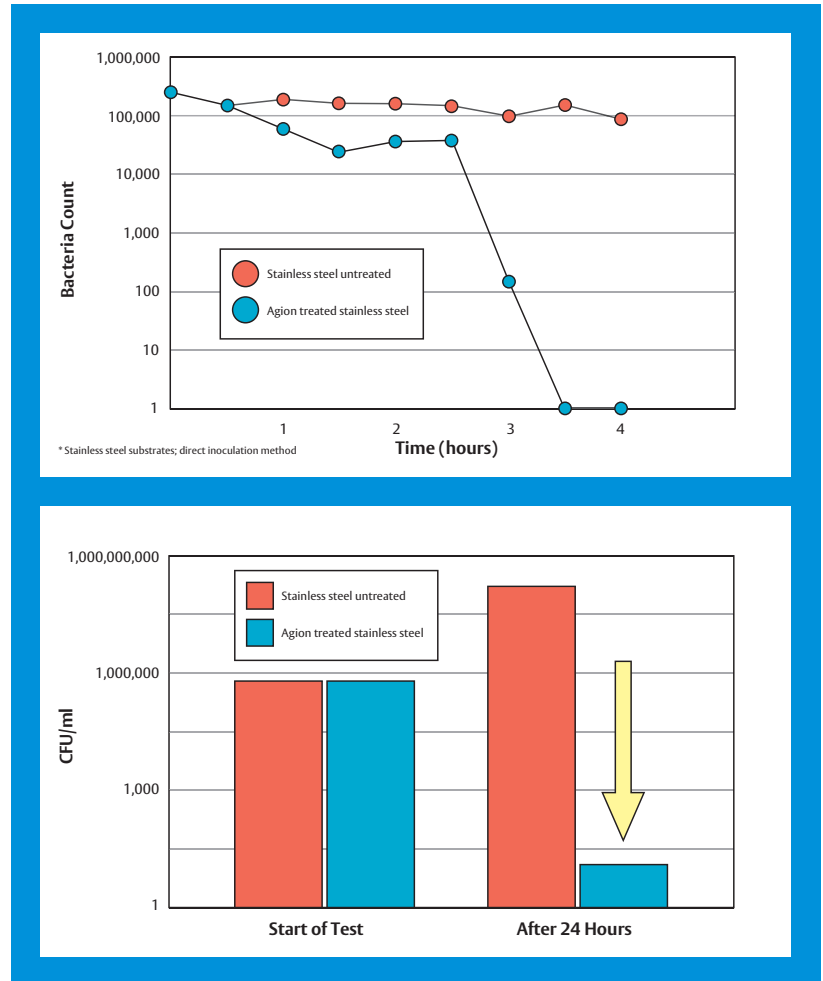
Effective – Silver, the active ingredient, is an aggressive, broad-spectrum antimicrobial, even against drug-resistant strains of bacteria.

Natural – Silver is a naturally occurring, safe and non-toxic antimicrobial agent.

Safe – The finish is EPA and NSF approved and FDA listed for use in medical and food preparation equipment.

Long-Lasting – Controlled release mechanism ensures continuous efficacy.

Efficacy Data - Bacterial Reduction



MicroShield Efficacy: These charts show an untreated stainless steel surface versus an Agion treated stainless steel surface that has been exposed to bacteria. There is significant bacteria reduction after 24 hours. (Source: Agion Technologies, Inc.)



MicroShield™

As part of its promise to provide innovative solutions to their customers, ASSA ABLOY Group companies offer the MicroShield technology, a silver-based antimicrobial coating designed to stem the spread of germs and bacteria.

MicroShield™ is a trademark of the respective ASSA ABLOY Group company.



The Agion antimicrobial is not intended as a substitute for good hygiene. Coated products must still be cleaned to insure the surfaces will be free of destructive microbes. ASSA ABLOY makes no representations or warranties, express or implied, as to the efficacy of the Agion antimicrobial. A copy of the Agion warranty is available upon request.

Agion is a registered trademark of Agion Technologies, Inc., Wakefield, MA, USA



Training and Education

ASSA ABLOY Door Security Solutions Canada offers a full range of formalized training programs that can be customized to your needs. From hands-on workshops to regulatory seminars, training may occur on site or at our training centre located in Vaughan, ON. We can provide training for everyone involved in working with the end-user - from staff personnel to service vendors - to ensure security needs are addressed and satisfied.

In addition, we are a leading provider of certified workshops on products, procedures, regulations and installation techniques. Our full range of presentations include:

- + Basic Architectural Hardware
- + Electronic Access Control
- + Basic Steel Doors and Frames
- + Basic Electrified Hardware
- + Conducting a Keying Conference

We're Here to Help

Together ASSA ABLOY Group companies provide innovative customized systems – including everything from reliably durable hardware, doors and frames to the most sophisticated access control options. Our worldwide network of companies has the resources and the expertise to provide you with a comprehensive range of products, training and service – all from one source.

All ASSA ABLOY Group companies specialize in providing life-safety and security solutions. Since this is our sole focus, you can confidently rely on our knowledge and support to help guide you in devising appropriate solutions for every application.



hollow metal doors & frames | mechanical & electromechanical locks | electric strikes
exit devices | door closers & controls | hinges | pivots | builders' hardware
access control systems | electromechanical products & accessories

WE'RE HERE TO HELP! Contact us for complete opening solutions.
800.461.3007 | 905.738.2466 | www.assaabloycanadadss.ca

ASSA ABLOY is the global leader in door opening solutions, dedicated to satisfying end-user needs for security, safety and convenience.

ASSA ABLOY

ADAMS RITE | architectural hardware
www.adamsrite.com

ASSA | architectural hardware
www.assalock.com

CORBIN RUSSWIN | architectural hardware
www.corbinrusswin.com

EFF EFF | electric strikes and accessories
www.effeff.com

FLEMING BARON | steel doors and frames
www.flemingbaron.com

FOLGER ADAM EDC | electric strikes and accessories
www.folgeradamedc.com

HES | electric strikes and accessories
www.hesinnovations.com

MARKAR | architectural hardware
www.markar.com

McKINNEY | hinges and builders' hardware
www.mckinneyhinge.com

NORTON | door controls
www.nortondoorcontrols.com

RIXSON | specialty door controls
www.rixson.com

SARGENT | architectural hardware
www.sargentlock.com

SECURITRON | electromagnetic locks and access control accessories
www.securitron.com

YALE | commercial locks and hardware
www.yalecommercial.com

LiteGuide™

As part of their promise to provide innovative solutions to their customers, ASSA ABLOY Group companies offer the LiteGuide system, a luminescent egress marking system. LiteGuide installation is facilitated by ASSA ABLOY's ElectroLynx, a universal quick-connect system that simplifies the electrification of the door.

LiteGuide™ is a trademark of ASSA ABLOY, Inc.

ElectroLynx®

As part of their promise to provide innovative, fast and effective, and higher security solutions to their customers, ASSA ABLOY Group companies offer ElectroLynx, a universal quick-connect system that simplifies the electrification of the door opening.

ElectroLynx® is a registered trademark of ASSA ABLOY, Inc.

MicroShield™

As part of its promise to provide innovative solutions to their customers, ASSA ABLOY Group companies offer the MicroShield technology, a silver-based antimicrobial coating designed to stem the spread of germs and bacteria.

MicroShield™ is a trademark of ASSA ABLOY, Inc.

Door Security Solutions Canada

160 Four Valley Drive

Vaughan, ON L4K 4T9

800.461.3007 | 905.738.2466

www.assaabloycanadadss.ca